

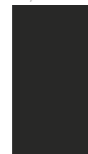
Pvto. / Floor / Sol: Konzept Argent 60x120 Rectificado

KONCEPT

60x120 cm
23,62"x47,24"



30x60 cm
11,81"x23,62"



120x120 cm
47,24"x47,24"



75x75 cm
29,5"x29,5"



60x60 cm
23,62"x23,62"



30x30 (7x7) cm
11,81"x11,81"



Piezas complementarias, ver en página 242.
Special pieces, see page 242.
Pièces supplémentaires, voir page 242.



DIN 51130	UNE-ENV 12633	PTV (DRY)	PTV (WET)	UNE-ENV 12633	PTV (DRY)	PTV (WET)	DIN 51130	UNE-ENV 12633	PTV (DRY)	PTV (WET)
R9	CLASE 1	60	40	CLASE 1	55	30	R10	CLASE 3	70	65
							ADZ	ADZ	ADZ	ADZ

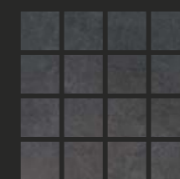
COMPACTTO PEDRA
GRES PORCELÁNICO RECTIFICADO
RECTIFIED PORCELAIN TILES
GRÈS CÉRAMÉ RECTIFIÉE

COMPACTTO PEDRA SEMIPULIDO
GRES PORCELÁNICO SEMIPULIDO RECTIFICADO
RECTIFIED SEMIPOLISHED PORCELAIN TILES
GRÈS CÉRAMÉ SEMIPOLI RECTIFIÉE



• Konzept	Argent	60x120	M32	35.869.135.2967	●
• Konzept	Argent	60x120	M40	39.869.135.2967	●
• Konzept	Argent	30x60(c)	M20	35.450.135.2967	●
• Konzept	Argent	30x60(c)	M28	39.450.135.2967	●
• Konzept	Argent	120x120	M35	35.120.135.2967	●
• Konzept	Argent	120x120	M42	39.120.135.2967	●
• Konzept	Argent	75x75	M30	35.875.135.2967	●
• Konzept	Argent	75x75	M38	39.875.135.2967	●
• Adz.Konzept	Argent	75x75	M31	35.875.135.0225	●
• Konzept	Argent	60x60	M20	35.840.135.2967	●
• Konzept	Argent	60x60	M28	39.840.135.2967	●
• Adz.Konzept	Argent	60x60	M21	35.840.135.0225	●

• Konzept	Gris	60x120	M32	35.869.002.2967	●
• Konzept	Gris	60x120	M40	39.869.002.2967	●
• Konzept	Gris	30x60(c)	M20	35.450.002.2967	●
• Konzept	Gris	30x60(c)	M28	39.450.002.2967	●
• Konzept	Gris	120x120	M35	35.120.002.2967	●
• Konzept	Gris	120x120	M42	39.120.002.2967	●
• Konzept	Gris	75x75	M30	35.875.002.2967	●
• Konzept	Gris	75x75	M38	39.875.002.2967	●
• Adz.Konzept	Gris	75x75	M31	35.875.002.0225	●
• Konzept	Gris	60x60	M20	35.840.002.2967	●
• Konzept	Gris	60x60	M28	39.840.002.2967	●
• Adz.Konzept	Gris	60x60	M21	35.840.002.0225	●



• Konzept	Mica	60x120	M32	35.869.125.2967	●
• Konzept	Mica	60x120	M40	39.869.125.2967	●
• Konzept	Mica	30x60(c)	M20	35.450.125.2967	●
• Konzept	Mica	30x60(c)	M28	39.450.125.2967	●
• Konzept	Mica	120x120	M35	35.120.125.2967	●
• Konzept	Mica	120x120	M42	39.120.125.2967	●
• Konzept	Mica	75x75	M30	35.875.125.2967	●
• Konzept	Mica	75x75	M38	39.875.125.2967	●
• Konzept	Mica	60x60	M20	35.840.125.2967	●
• Konzept	Mica	60x60	M28	39.840.125.2967	●

• Konzept	Argent	30x30(7)Malla	M43	21.590.135.2967	●
• Konzept	Argent	30x30(7)Malla	M43	40.590.135.2967	●
• Konzept	Gris	30x30(7)Malla	M43	21.590.002.2967	●
• Konzept	Gris	30x30(7)Malla	M43	40.590.002.2967	●
• Konzept	Mica	30x30(7)Malla	M43	21.590.125.2967	●
• Konzept	Mica	30x30(7)Malla	M43	40.590.125.2967	●

Empaquetado / Packaging / Emballage

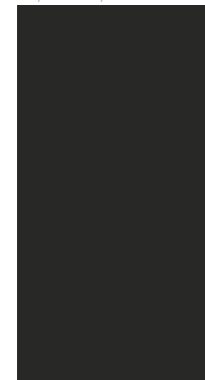
Formato	pz/cj	m ² /cj	m ² /pl	cj/pl	kg/cj	kg/pl	Formato	pz/cj	m ² /cj	m ² /pl	cj/pl	kg/cj	kg/pl
60x120	2	1,44	46,08	32	34,00	1108	75x75	3	1,69	50,7	30	41,20	1256
30x60	6	1,08	51,84	48	22,00	1076	60x60	4	1,44	43,2	30	30,20	926
120x120	1	1,44	51,84	36	38,40	1422,4	30x30(7)	11	1	42	42	23,1	990,2



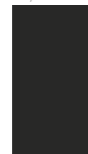
Rvto. / Wall / Rvtm.: Konzept Nâcar 30x60 Rectificado

KONCEPT

60x120 cm
23,62"x47,24"



30x60 cm
11,81"x23,62"



120x120 cm
47,24"x47,24"



75x75 cm
29,5"x29,5"



60x60 cm
23,62"x23,62"



30x30 (7x7) cm
11,81"x11,81"



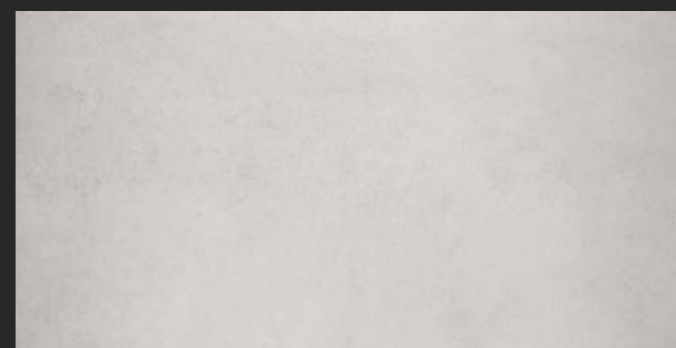
Piezas complementarias, ver en página 242.
Special pieces, see page 242.
Pièces supplémentaires, voir page 242.



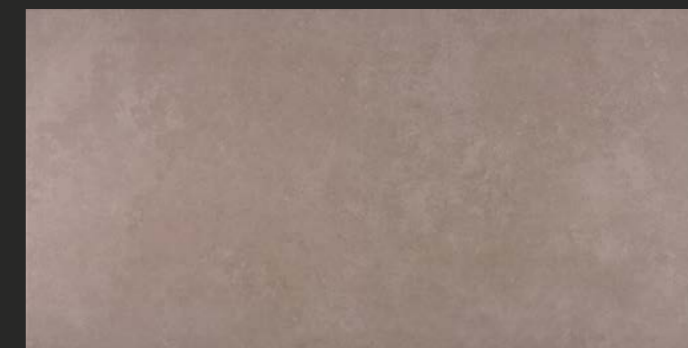
DIN 51190	UNE-ENV 12633	PTV (DRY)	PTV (WET)	UNE-ENV 12633	PTV (DRY)	PTV (WET)	DIN 51190	UNE-ENV 12633	PTV (DRY)	PTV (WET)
R9	CLASE 1	60	40	CLASE 1	55	30	R10	CLASE 3	70	65
							ADZ	ADZ	ADZ	ADZ

COMPACTTO PEDRA
GRES PORCELÁNICO RECTIFICADO
RECTIFIED PORCELAIN TILES
GRÈS CÉRAME RECTIFIÉE

COMPACTTO PEDRA SEMIPULIDO
GRES PORCELÁNICO SEMIPULIDO RECTIFICADO
RECTIFIED SEMIPOLISHED PORCELAIN TILES
GRÈS CÉRAME SEMIPOLI RECTIFIÉE



- Konzept Nâcar 60x120 M32 35.869.030.2967
- Konzept Nâcar 60x120 M40 39.869.030.2967
- Konzept Nâcar 30x60(c) M20 35.450.030.2967
- Konzept Nâcar 30x60(c) M28 39.450.030.2967
- Konzept Nâcar 120x120 M35 35.120.030.2967
- Konzept Nâcar 120x120 M42 39.120.030.2967
- Konzept Nâcar 75x75 M30 35.875.030.2967
- Konzept Nâcar 75x75 M38 39.875.030.2967
- Adz.Konzept Nâcar 75x75 M31 35.875.030.0225
- Konzept Nâcar 60x60 M20 35.840.030.2967
- Konzept Nâcar 60x60 M28 39.840.030.2967
- Adz.Konzept Nâcar 60x60 M21 35.840.030.0225



- Konzept Desert 60x120 M32 35.869.364.2967
- Konzept Desert 60x120 M40 39.869.364.2967
- Konzept Desert 30x60(c) M20 35.450.364.2967
- Konzept Desert 30x60(c) M28 39.450.364.2967
- Konzept Desert 120x120 M35 35.120.364.2967
- Konzept Desert 120x120 M42 39.120.364.2967
- Konzept Desert 75x75 M30 35.875.364.2967
- Konzept Desert 75x75 M38 39.875.364.2967
- Adz.Konzept Desert 75x75 M31 35.875.364.0225
- Konzept Desert 60x60 M20 35.840.364.2967
- Konzept Desert 60x60 M28 39.840.364.2967
- Adz.Konzept Desert 60x60 M21 35.840.364.0225



- Konzept Taupe 60x120 M32 35.869.285.2967
- Konzept Taupe 60x120 M40 39.869.285.2967
- Konzept Taupe 30x60(c) M20 35.450.285.2967
- Konzept Taupe 30x60(c) M28 39.450.285.2967
- Konzept Taupe 120x120 M35 35.120.285.2967
- Konzept Taupe 120x120 M42 39.120.285.2967
- Konzept Taupe 75x75 M30 35.875.285.2967
- Konzept Taupe 75x75 M38 39.875.285.2967
- Konzept Taupe 60x60 M20 35.840.285.2967
- Konzept Taupe 60x60 M28 39.840.285.2967



- Konzept Nâcar 30x30(7)Malla M43 21.590.030.2967
- Konzept Nâcar 30x30(7)Malla M43 40.590.030.2967
- Konzept Desert 30x30(7)Malla M43 21.590.364.2967
- Konzept Desert 30x30(7)Malla M43 40.590.364.2967
- Konzept Taupe 30x30(7)Malla M43 21.590.285.2967
- Konzept Taupe 30x30(7)Malla M43 40.590.285.2967

Empaquetado / Packaging / Emballage

Formato	pz/cj	m ² /cj	m ² /pl	cj/pl	kg/cj	kg/pl
60x120	2	1,44	46,08	32	34,00	1108
30x60	6	1,08	51,84	48	22,00	1076
120x120	1	1,44	51,84	36	38,40	1422,4

Formato	pz/cj	m ² /cj	m ² /pl	cj/pl	kg/cj	kg/pl
75x75	3	1,69	50,7	30	41,20	1256
60x60	4	1,44	43,2	30	30,20	926
30x30(7)	11	1	42	42	23,1	990,2