

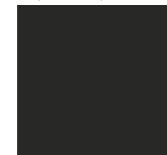
Pvto. / Floor / Sol: Cr. Etrvria Smoke 75,5x75,5 Rectificado

CR. ETRVRIA

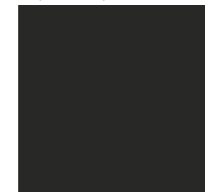
75,5x75,5 cm
29,72"x29,72"



60,5x60,5 cm
23,81"x23,81"



76x76 cm
29,92"x29,92"



61x61 cm
24,01"x24,01"



PVTO. MAT. REC. MAT. NO REC. VAR. LEVE 20 mm DIN 51130 R11 UNE-ENV 12633 CLASE 3 PTV (DRY) 55 PTV (WET) 45

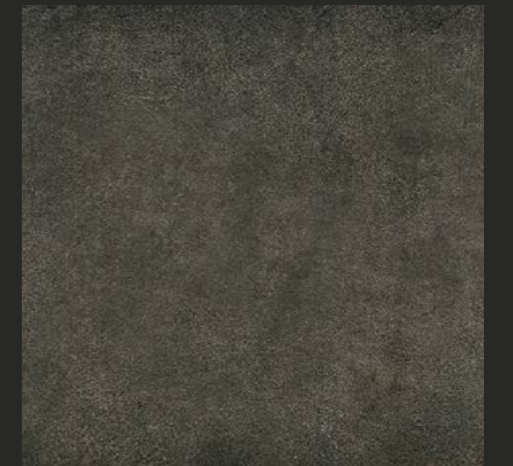
COMPACTTO PEDRA
GRES PORCELÁNICO / GRES PORCELÁNICO RECTIFICADO
PORCELAIN TILES / RECTIFIED PORCELAIN TILES
GRÈS CÉRAME / GRÈS CÉRAME RECTIFIÉE



- Cr. Etrvria Ferro 75,5x75,5(20mm) M71 35.173.508.0271
- Cr. Etrvria Ferro 60,5x60,5(20mm) M69 35.701.508.0271
- Cr. Etrvria Ferro 76x76 (20mm) M68 11.877.508.0271
- Cr. Etrvria Ferro 61x61(20mm) M67 11.361.508.0271



- Cr. Etrvria Magma 75,5x75,5(20mm) M71 35.173.249.0271
- Cr. Etrvria Magma 60,5x60,5(20mm) M69 35.701.249.0271
- Cr. Etrvria Magma 76x76 (20mm) M68 11.877.249.0271
- Cr. Etrvria Magma 61x61(20mm) M67 11.361.249.0271



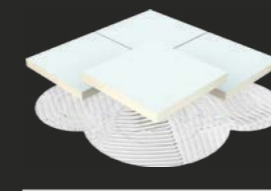
- Cr. Etrvria Nero 75,5x75,5(20mm) M71 35.173.215.0271
- Cr. Etrvria Nero 60,5x60,5(20mm) M69 35.701.215.0271
- Cr. Etrvria Nero 76x76 (20mm) M68 11.877.215.0271
- Cr. Etrvria Nero 61x61(20mm) M67 11.361.215.0271



- Cr. Etrvria Rope 75,5x75,5(20mm) M71 35.173.538.0271
- Cr. Etrvria Rope 60,5x60,5(20mm) M69 35.701.538.0271
- Cr. Etrvria Rope 76x76 (20mm) M68 11.877.538.0271
- Cr. Etrvria Rope 61x61(20mm) M67 11.361.538.0271



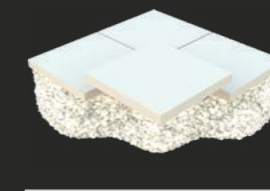
- Cr. Etrvria Smoke 75,5x75,5(20mm) M71 35.173.540.0271
- Cr. Etrvria Smoke 60,5x60,5(20mm) M69 35.701.540.0271
- Cr. Etrvria Smoke 76x76 (20mm) M68 11.877.540.0271
- Cr. Etrvria Smoke 61x61(20mm) M67 11.361.540.0271



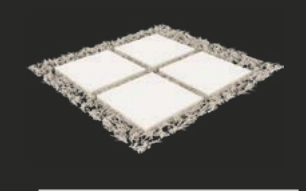
Colocación / Laying / Mise en Place
Tradicional
Traditionnelle



Colocación / Laying / Mise en Place
Sobreelevado
Raised Floor
Plancher Surélevé



Colocación / Laying / Mise en Place
En Seco Grava
Dry Gravel
Sec Gravier



Colocación / Laying / Mise en Place
En Seco Césped
Dry Grass
Sec Pelouse

Empaquetado / Packaging / Emballage

Formato	pz/cj	m ² /cj	m ² /pl	cj/pl	kg/cj	kg/pl
75,5x75,5 (20mm)	1	0,57	25,65	45	27,10	1239,5
60,5x60,5 (20mm)	2	0,73	21,9	30	32,80	1004
76x76 (20mm)	1	0,58	26,1	45	27,35	1250,75

Formato	pz/cj	m ² /cj	m ² /pl	cj/pl	kg/cj	kg/pl
61x61 (20mm)	2	0,74	22,2	30	33,00	1010